

DCAC

Conservation Area Appraisals Updates

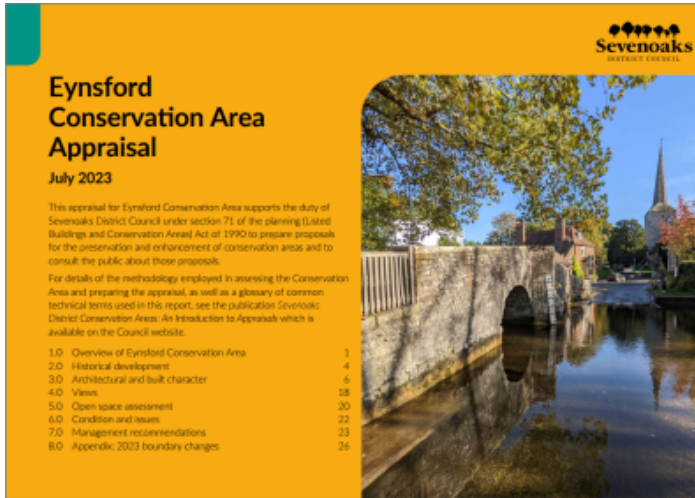
11 July 2023

Introduction

- National legislation
- Rolling programme of review
- 41 conservation areas
- Current project has reviewed:
 - Eynsford Conservation Area
 - Farningham Conservation Area
 - Kemsing Conservation Area



The Process



Eynsford Conservation Area Appraisal
July 2023

This appraisal for Eynsford Conservation Area supports the duty of Sevenoaks District Council under section 71 of the planning (Listed Buildings and Conservation Areas) Act of 1990 to prepare proposals for the preservation and enhancement of conservation areas and to consult the public about those proposals.

For details of the methodology employed in assessing the Conservation Area and preparing the appraisal, as well as a glossary of common technical terms used in this report, see the publication Sevenoaks District Conservation Areas: An Introduction to Appraisals which is available on the Council's website.

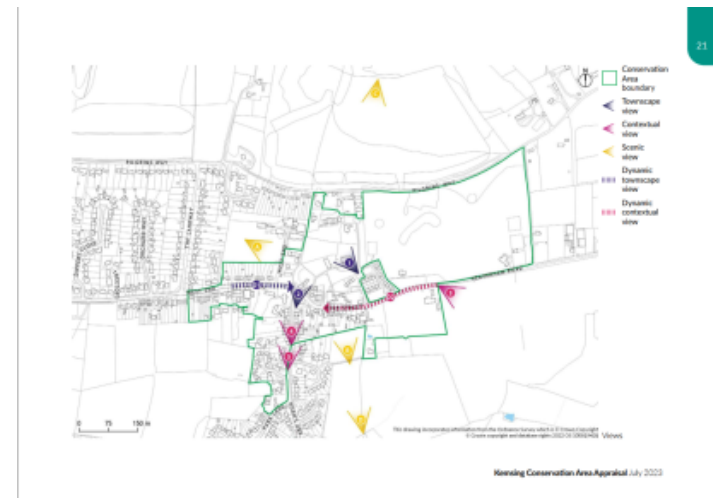
1.0 Overview of Eynsford Conservation Area	1
2.0 Historical development	4
3.0 Architectural and built character	6
4.0 Views	18
5.0 Open space assessment	20
6.0 Condition and issues	22
7.0 Management recommendations	23
8.0 Appendix 2023 boundary changes	26

- Revised format that includes:
 - Open Space Assessment
 - Views
 - Management Recommendations

- Public engagement

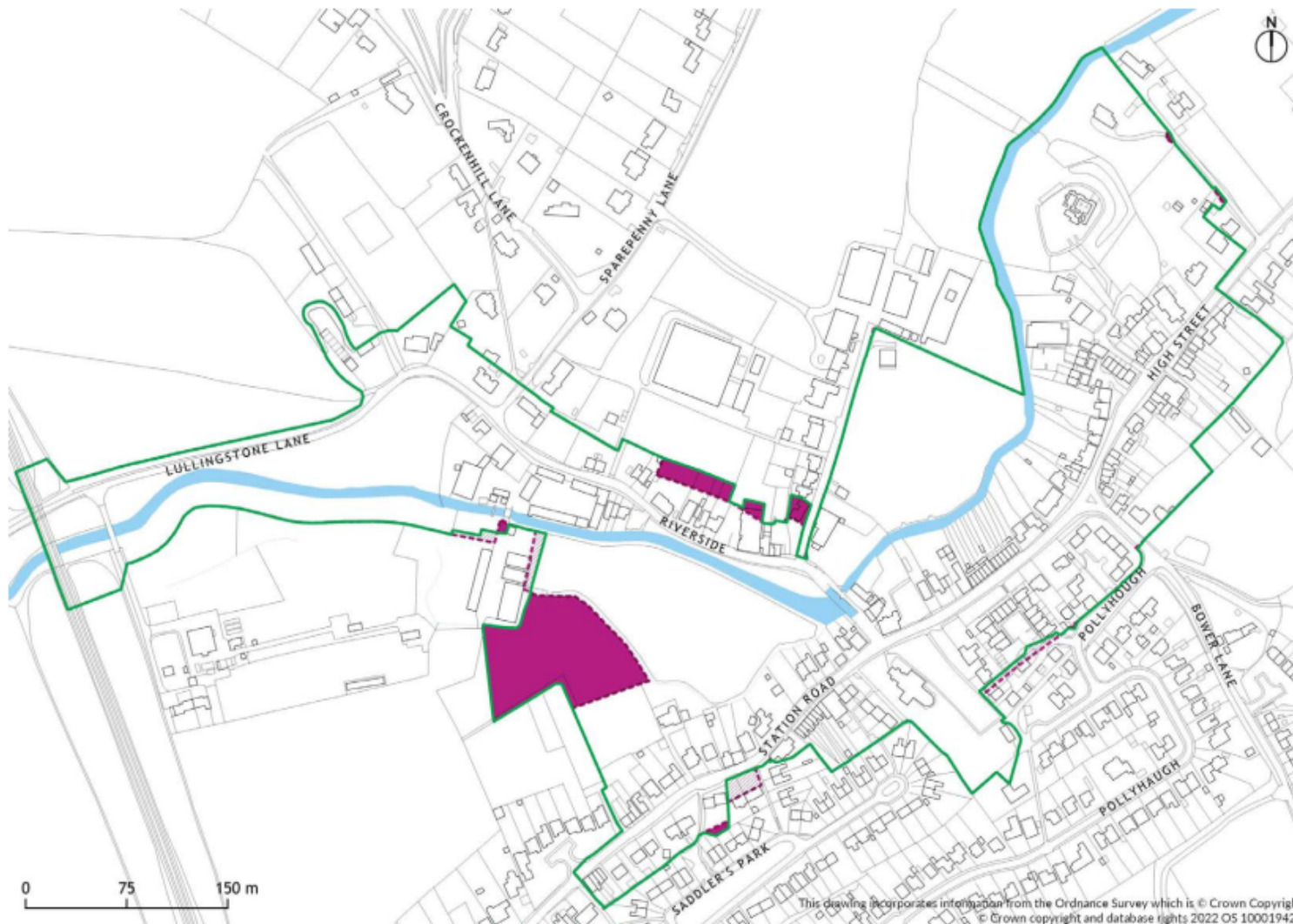






Eynsford Conservation Area Appraisal July 2023



Horwist Conservation Area Appraisal July 2023

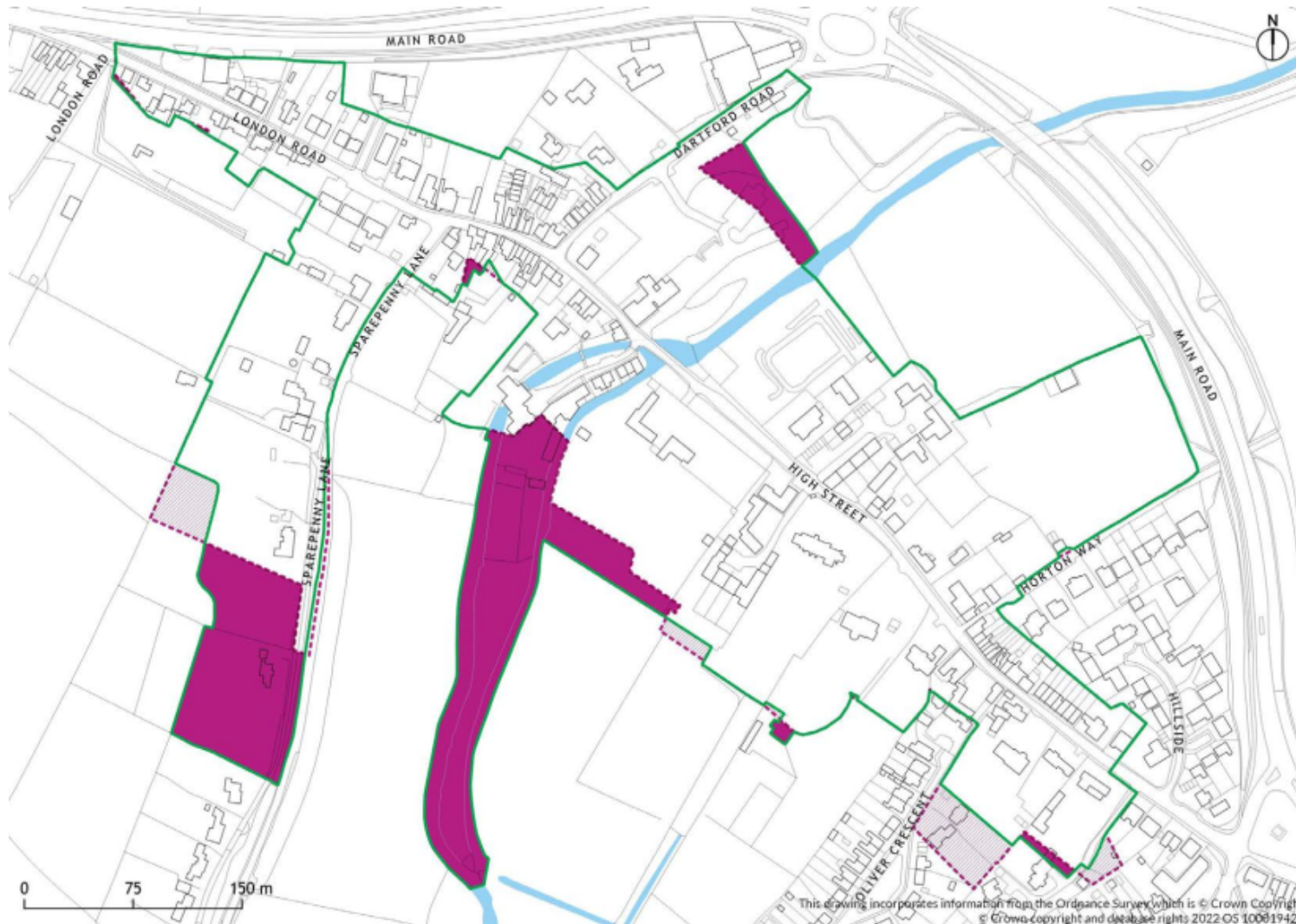
Eynsford Conservation Area







-  Revised Conservation Area boundary
-  Previous Conservation Area boundary
-  Additions
-  Removals

The Conservation Area was first designated in 1973 and extended in 2006. This map shows the boundary as adopted in 2006 with amendments made following review in 2023.

Farningham Conservation Area

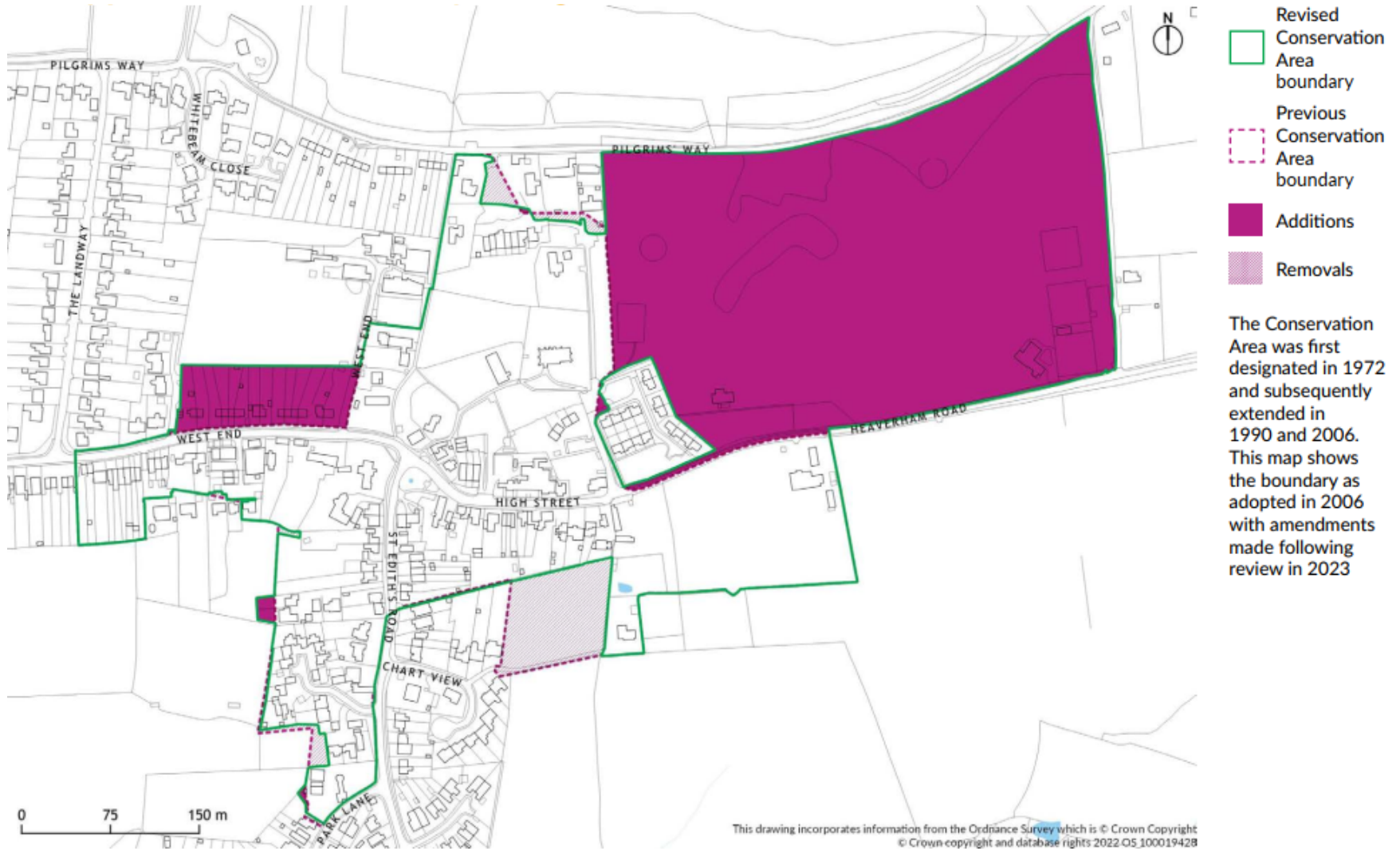


-  Revised Conservation Area boundary
-  Previous Conservation Area boundary
-  Additions
-  Removals

The Conservation Area was first designated in 1969 and the boundaries were subsequently extended in 1990 and 2006. This map shows the boundary as adopted in 2006 with amendments made following review in 2023.

This drawing incorporates information from the Ordnance Survey which is © Crown Copyright
© Crown copyright and database rights 2022 OS 100019428

Kemsing Conservation Area



Kemsing Conservation Area

